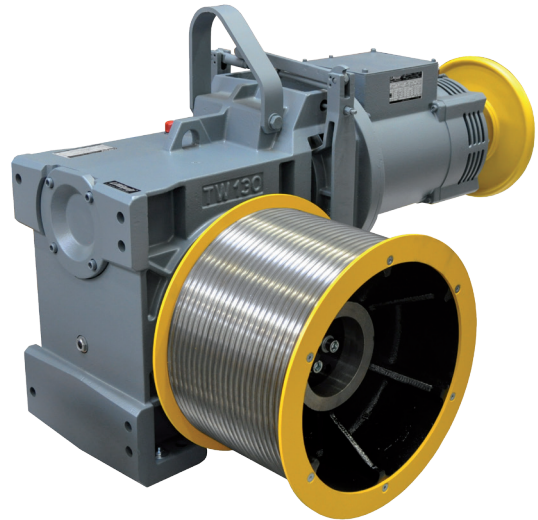


Rope drums & geared machines

in cooperation with **LiftEquip®**
ELEVATOR COMPONENTS

We create a perfect solution for you



Technical Data

Rated load max. Q [kg]	300		450		630		750		900	
Car weight max. F [kg]	300		450		500		700		700	
Total load F+Q [kg]	600		900		1130		1450		1600	
Rated speed [m/s]	0,5	0,63	0,5	0,63	0,5	0,63	0,5	0,63	0,5	0,63
Travel height max. [m]	12		12		12		12		12	
Machine type*	TW63		TW130		TW130		TW160		TW160	
Ratio	48:1	33:1	52:1	42:1	42:1	35:1	50:1	41:1	50:1	35:1
Drum diameter [mm]	360	360	450	450	450	450	485	485	450	450
Drum length [mm]	240	240	265	265	265	265	300	300	240	240
Number of ropes	2	2	2	2	2	2	2	2	2	2
Rope diameter [mm]	8	8	10	10	10	10	12	12	11	11
Dissipated heat [kJ/h]	1145	1580	1608	2194	2275	2977	3116	4020	3409	4450
Motor output [kW]	4,5	5,5	7,3	8,6	8,6	10,5	11,0	13,5	12,1	14,4
Motor current [A]	12,1	14,9	19,8	23,2	19,4	23,8	25,0	30,7	32,8	32,7
Starting current [A]	15,3	20,9	25,7	33,6	25,6	33,5	29,5	39,1	39,9	43,9
Engine speed [1/min]	1273	1103	1104	1123	891	936	995	1027	1061	936

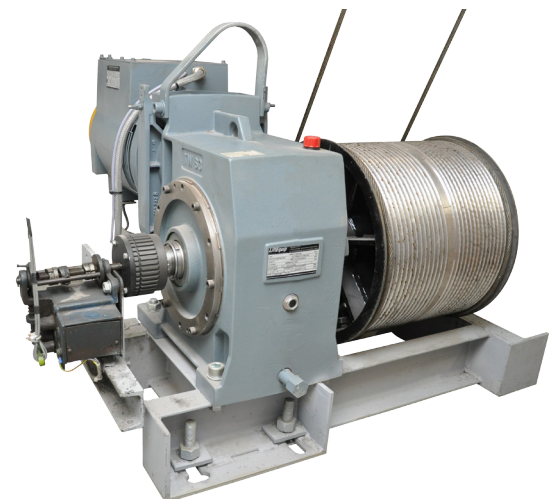
* For higher loads the W-series/LiftEquip is available on request

MODERN TECHNOLOGY „Made in Germany“ FOR THE FIRST GENERATION OF ELEVATORS

Also nowadays this kind of machines are used in many buildings. For providing their service in future we offer rope drums in combination with the TW-series by LiftEquip for a smooth operation of your elevator.

The car is directly mounted on the rope and the drive coils the ropes on the drum. The non-use of counterweights saves space and the whole shaft cross section can be used for the cabin. Therefore existing hydraulic elevators and rope elevators in limited space areas can be modernised easily.

Our whole range of options (for example Ex-protection or vertical motors) is available for you.



Requirements of EN81-1:

- At least 2 ropes which are wound single-layer
- D/d (drum/rope): > 40
- Rope diameter: ≥ 8 mm
- Rope safety > 12
- Speed max. 0,63 m/s